

Nokia IP Security Solutions

Nokia IP350

Nokia IP350 is a purpose-built IP security platform for the small enterprise.

Nokia IP350 combines market-leading security software and the Nokia IPSO™ secure operating system for a secure, reliable and manageable security solution. It is a cost-effective system ideal for small to mid-sized enterprise markets that demand robust systems with excellent performance.

Nokia delivers industry-leading solutions across Nokia IP Security Platforms meeting stringent customer security needs with best-of-breed technology partners. These partners include Check Point Software Technologies for VPN-1/FireWall-1 and additional partners through the Nokia Security Developers Alliance.

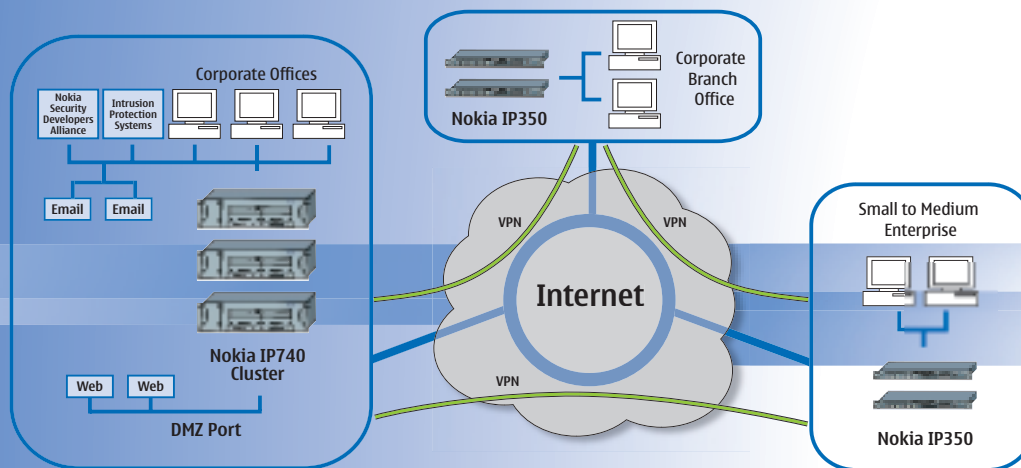
Nokia IP350 delivers best-in-class price/performance against the competition for real-world mixed traffic environments as well as offering high port density in a 1 RU system. It's an excellent choice to support small to mid-sized enterprise customers who wish to grow and have their solution grow with them and who need robust security, reliability and ease of management from a low Total Cost of Ownership (TCO) solution.

Key features available with Nokia IP350 include on-board encryption, large routing tables (BGP complex OSPF environments), maximum expansion capacity with up to eight 10/100 Ethernet ports, synched firewalls in "High Availability" environments, and the industry-proven hardened Nokia IPSO operating system with its web and CLI interface. Nokia IPSO includes a wide



variety of high value features such as Nokia patented IP Clustering. In addition, Nokia IP350 supports applications such as Nokia Horizon Manager and new Developers Alliance partner applications from Tripwire, SurfControl, Open Service and others. Nokia IPSO supports a wide array of protocols, such as RADIUS client and server, TACACS+ Client and others.

Best of all, security, performance and reliability are all backed by world-class Nokia First Call—Final Resolution global support.



Nokia IP350 At a Glance

Internet Protocols

- ARP
- BGP-4 [software option]
- Bootp/DHCP Relay
- CIDR
- COPS
- Diff Serv (Expedited Forwarding)
- DVMRP
- GRE
- ICMP
- ICMP Router Discovery
- IGMP
- IGRP [software option]
- IP (RFC 791)
- IPv6 core protocols
- OSPF
- PIM-DM
- PIM-SM
- Multicast Tunnels
- RIP
- RIPv2 with MD5 authentication
- Route Aggregation
- Route Redistribution
- Static Routes
- UDP
- Un-numbered Interfaces

LAN Support

- 10/100 Mbps Ethernet
- Transparent (Bridging) mode
- VLAN tagging

WAN Support

- Frame Relay
- HDLC (Cisco-compatible)
- ISDN [interface card option]
- PPP
- T1 [interface card option]
- E1 [interface card option]
- V.35 [interface card option]
- X.21 [interface card option]

Americas

Tel: 1 877 997 9199

Email: ipsecurity.na@nokia.com

Asia Pacific

Tel: +65 6588 3364

Email: ipsecurity.apac@nokia.com

Europe, Middle East and Africa

France +33 170 708 166

UK +44 161 601 8908

Email: ipsecurity.emea@nokia.com

Performance

- Firewall – large packets
 - 350 Mbps
- VPN – large packets
 - 80 Mbps 3DES
 - AES

Management

- Nokia Network Voyager (HTTP server)
- Command Line Interface (CLI)
- Command line utilities
- DHCP
- FTP
- SNMPv1/v2c/v3
- SSH (for CLI)
- SSL/TLS (for Nokia Network Voyager)
- Telnet (for CLI)
- Supported in Nokia Horizon Manager

Application Acceleration

- Firewall Flows
- VPN Acceleration

Environment

- Temperature: 5°C to 40°C
- Humidity: 10% - 90% (non-condensing)
- Altitude: 10,000 ft

High Availability

- Nokia IP Clustering
- VRRP
- Check Point VPN-1/FireWall-1 State Sync

Security

- Access Control Lists
- Centralized Authentication
- Cryptographic Acceleration
- DNS Client
- IPSec
- MD5 Routing Authentication (RIPv2)
- NTP Client and Server
- RADIUS Client
- Read/Write and Read-Only Administrative Access
- S/Key (one-time password)
- SSH
- SSL/TLS
- TACACS+ Client
- Traffic Management

System Indicators

- Power and Fault
- Warning
- Port Status

Certifications

- ICSA
- EAL4 Common Criteria (ISO/IEC 15408)

Safety

- UL1950, CAN/CSA 22.2, No. 950-M95, (CE Mark) EN60950:1992, A1, A2:1993, A3:1995, A4:1997, A11:1998 with Japanese National Deviations

Emission Compliance

- FCC Part 15, Subpart B, Class A, EN50024, EN55022A 1998, CISPR 22 Class A 1985, EN61000-3-2, EN61000-3-3

Immunity

- EN55024 1998



Nokia IP350

Small Enterprise

Standard:

4 integrated 10/100 Base-T Ethernet ports
2 slots for Network Interface Cards
2 Type II PCMCIA
Encryption accelerator on board

Optional Interfaces:

- Dual port 10/100 Ethernet
- Single port serial V.35/X.21
- T1 single port
- E1 single port
- ISDN single port EU only

Hardware:

Height 1.75 in. / 4.5 cm (1U)
Depth 16 in. / 41 cm
Width 17 in. / 44 cm
Weight 17 lbs / 7.7 kg
Standard 19-inch rack mountable
Front access for maintenance

Power Requirements:

AC Input Voltage 100-120V/200-240VAC
Frequency 50/60Hz
AC Input Current 1.5/7.5A

